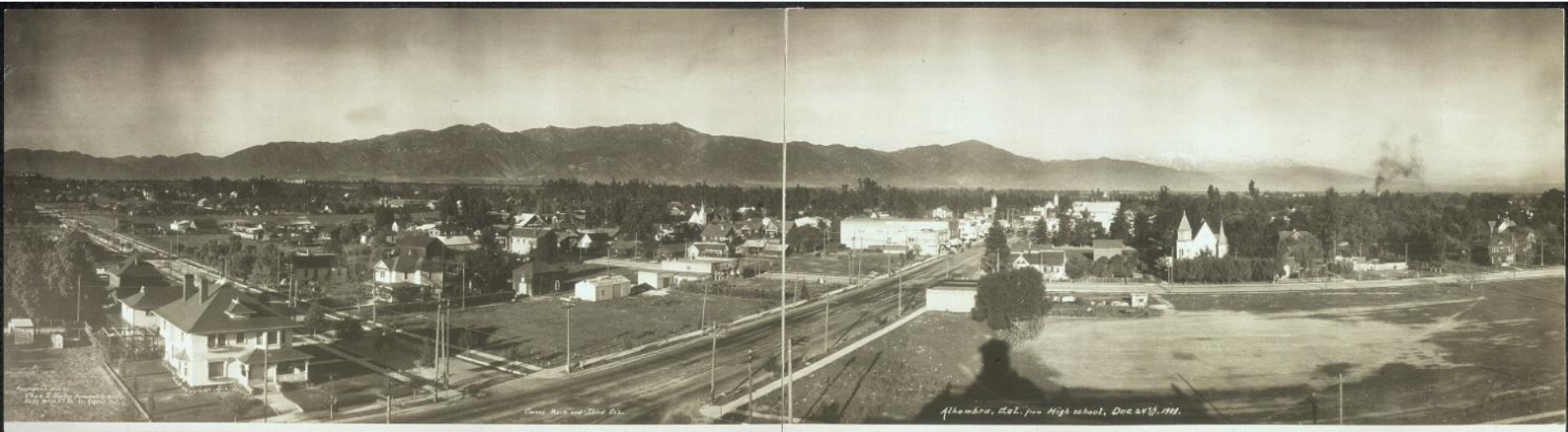


City of Alhambra Citywide Historic Context Statement *April 25, 2022*

HISTORIC RESOURCES GROUP

HISTORIC CONTEXT STATEMENT: POST-PLANNING COMMISSION REVISIONS

- Utilities and Infrastructure
 - Communications
 - Gas and Power
 - Water and Irrigation
 - Waster Management
- Freeway Construction and Development
- Annexations
- R-1 Residential Neighborhoods

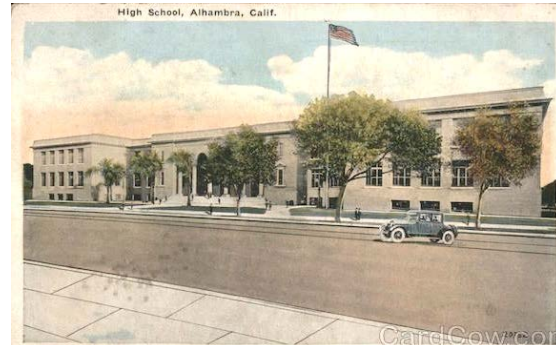


Bird's-eye view of Alhambra from the high school building, 1909.

HISTORIC CONTEXT STATEMENTS: SCOPE & ORGANIZATION

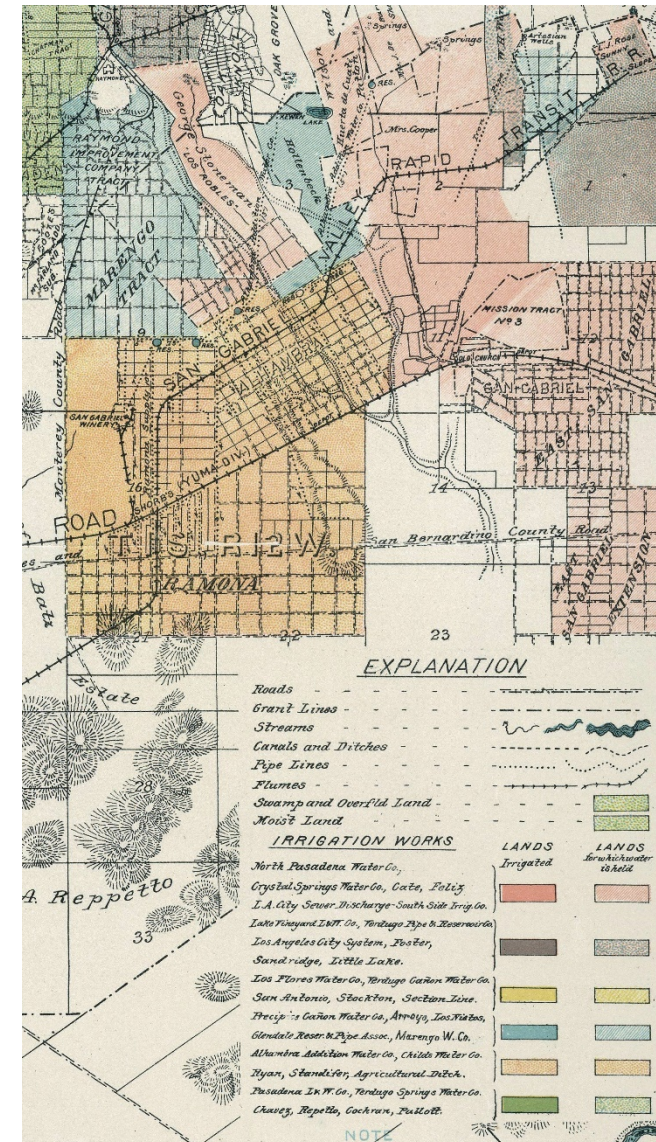
- Native American Settlement
- European Exploration (1542-1768)
- Spanish Rule (1769-1820)
- Mexican Rule (1821-1849)
- Early California (1850-1874)
- **Early Development of Alhambra (1875-1902)**
- **City Incorporation and Civic Improvement (1903-1919)**
- **City Expansion and Industrial Growth (1920-1940)**
- **Alhambra During World War II (1941-1945)**
- **Postwar Growth and Prosperity (1946-1967)**
- **Postwar Decline & Redevelopment (1968-1980)**
- **Alhambra Today (1981-present)**
- Architecture & Design (1875-1980)

HISTORIC RESOURCES GROUP



THEME: EARLY DEVELOPMENT OF ALHAMBRA (1875-1902)

- Establishment of initial telegraph and telephone operations
- Establishment of initial electrical service
- Development of initial irrigation and water storage systems
- Development of initial waste management operations



Detail of irrigation map showing water lines in Alhambra and the surrounding area, 1888.

THEME: CITY INCORPORATION AND CIVIC DEVELOPMENT (1903-1919)

- Expansion of existing telephone operations
- Expansion of electrical service and establishment of domestic gas supply
- Establishment of the City's municipal water department
- Establishment of the Tri-City Sewer Farm



Composite detail showing the area comprising present-day Alhambra, *Rueger's Atlas* showing country property of Los Angeles County, California, 1903.

THEME: CITY EXPANSION AND INDUSTRIAL GROWTH (1920-1940)

- Expansion of existing telephone operations
- Additions to existing domestic gas facilities
- Expansion of the Tri-City Sewer Farm
- Construction of Ramona Boulevard



HISTORIC RESOURCES GROUP

Top: Land use map showing part of Alhambra, 1936/1937.
Bottom: Plan for the activated sludge process at the new Tri-City Sewer Farm, circa 1922.

THEME: POSTWAR GROWTH AND PROSPERITY (1946-1967)

- Expansion of existing telephone operations
- Expansion of domestic gas supplies
- Development of San Bernardino and Long Beach Freeways



Midwick Hill Country Club 1932 Midwick Tract 1953 Spence Air Photo from Westways 1953 #2



Midwick Country Club, 1932 (top); Midwick Tract, 1953 (bottom).

THEME: POSTWAR DECLINE AND REDEVELOPMENT (1968-1980)

- Development of San Bernardino and Long Beach Freeways



Ramona Boulevard, 1935.



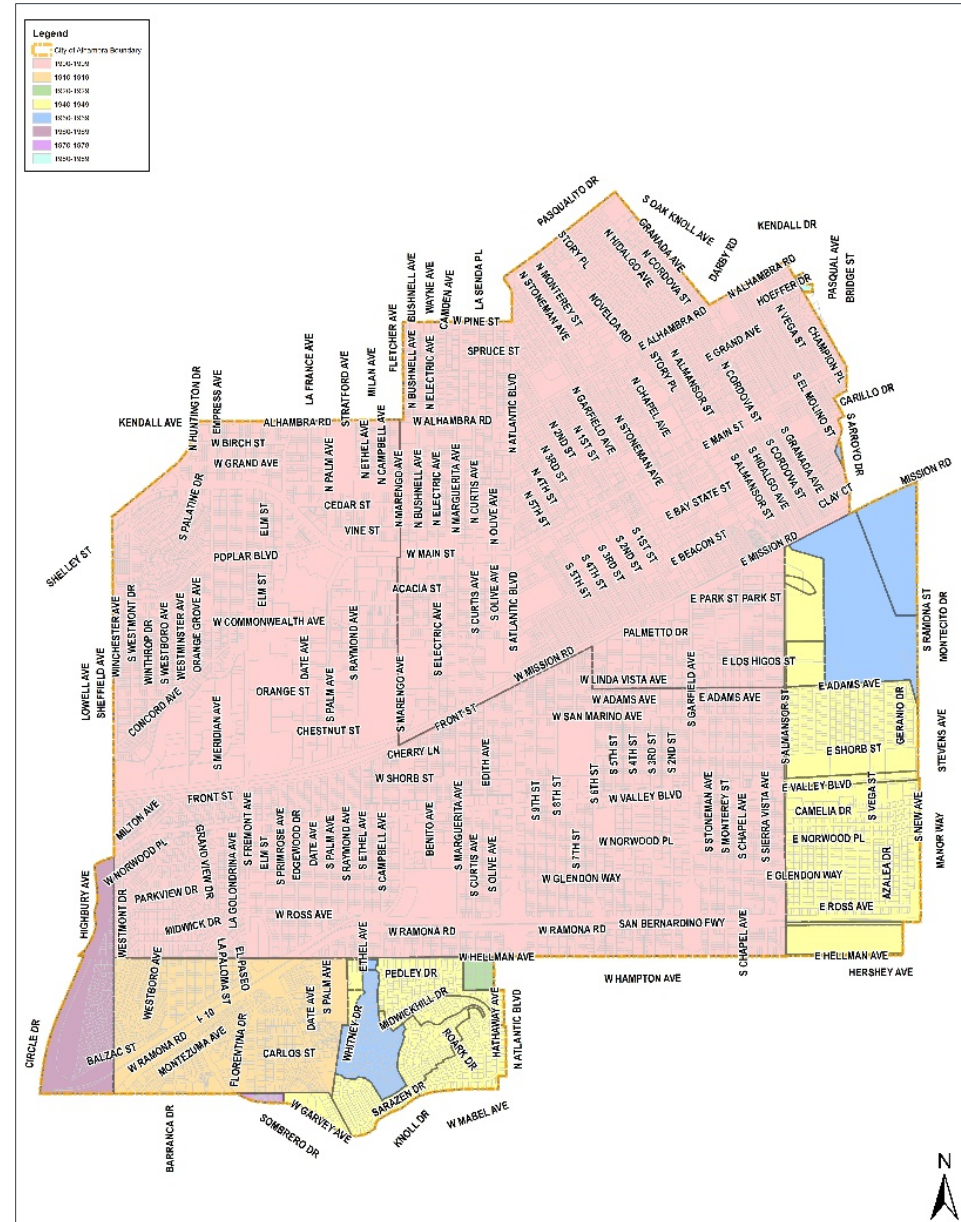
San Bernardino Freeway, circa 1970.

APPENDICES

- New Appendix C added to document annexations and provide links to annexation information
- New Appendix E added to document tract information for all 27 R-1 residential neighborhoods

Table C-1: Annexations Recorded, 1875-1989

Effective Date	Annexation Name	Annexation Information
7/6/1903	Original Incorporation	http://dpw.lacounty.gov/sur/nas/SMPM_Annexati onCity/ALH0001.pdf
1/22/1908	Election of 01-22-08	http://dpw.lacounty.gov/sur/nas/SMPM_Annexati onCity/ALH0002.pdf
10/23/1917	Granada Park	http://dpw.lacounty.gov/sur/nas/SMPM_Annexati onCity/ALH0003.pdf
5/27/1926	Midwick Addition	http://dpw.lacounty.gov/sur/nas/SMPM_Annexati onCity/ALH0004.pdf
11/28/1941	Midwick Addition No. 2	http://dpw.lacounty.gov/sur/nas/SMPM_Annexati onCity/ALH0005.pdf
11/30/1944	Pasadena Annex No. 1	http://dpw.lacounty.gov/sur/nas/SMPM_Annexati onCity/ALH0006.pdf
12/18/1944	Mark Keppel	http://dpw.lacounty.gov/sur/nas/SMPM_Annexati onCity/ALH0007.pdf
12/21/1944	T. W. A. Airport	http://dpw.lacounty.gov/sur/nas/SMPM_Annexati onCity/ALH0008.pdf
4/23/1945	Ramona Boulevard	http://dpw.lacounty.gov/sur/nas/SMPM_Annexati onCity/ALH0009.pdf
4/23/1945	Hellman Avenue	http://dpw.lacounty.gov/sur/nas/SMPM_Annexati onCity/ALH0010.pdf



Annexations in Alhambra by Decade. Map by HRG.

APPENDICES

- New Appendix E added to document tract information for all 27 R-1 residential neighborhoods

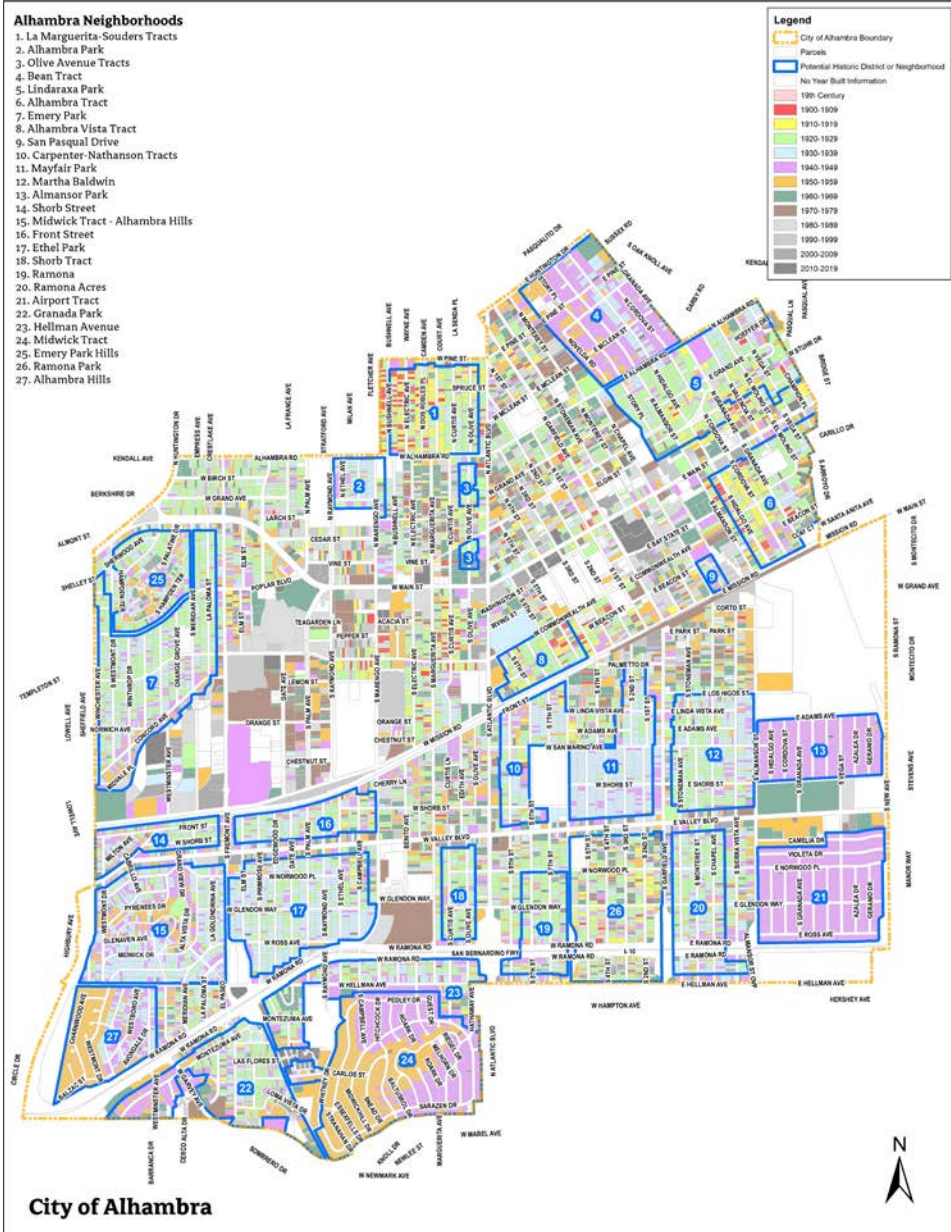


Table E-1: Tracts Recorded by R-1 Neighborhood

Map Key Number	Neighborhood Name	Principal Tracts
1	La Marguerita-Souders Tracts	<p><i>All tracts are subdivided from the Marengo Tract (1884, H. D. Bacon).</i></p> <ul style="list-style-type: none"> • Wuest Tract (1905) <ul style="list-style-type: none"> ○ B. B. Wuest, S. F. Wuest • Bushnell Avenue Tract (1906) <ul style="list-style-type: none"> ○ William B. Peck, John H. Carr, Dora M. Carr • Electric Villa Tract (1906) <ul style="list-style-type: none"> ○ Dora M. Carr, John H. Carr • Dos Robles Park Tract (1907) <ul style="list-style-type: none"> ○ Florence Bull • La Senda Tract (1908) <ul style="list-style-type: none"> ○ The Southern Trust Co., Adolph Graffen, Bertha Graffen • La Marguerita Tract (1909) <ul style="list-style-type: none"> ○ Adolph Graffen, Edmund Lincoln, Thomas S. Norton • Souders Tract (1909) <ul style="list-style-type: none"> ○ Frederick H. Souders, Blanche E. Souders • Tract No. 1145 (1911) <ul style="list-style-type: none"> ○ J. E. Whitman, Charles C. Thompson, Anna M. Brady, B. F. Davies, Ada Caldwell, George H. Keniston, H. G. Davies, Warren Wilson, Herbert E. Hewitt, Melvin R. Forbes, Title Guarantee & Trust Co. • Tract No. 2093 (1913) <ul style="list-style-type: none"> ○ Theodore F. Taylore, Cecilia P. Klein, Emma Craven, Edith L. Jaynes, Lillie O. Lee, Stewart Lee, J. W. Kelley, Ethel L. Kelley, Samuel D. Block, Samuel D. Block – trustee for interests of Sanford A. Cohn, a minor, California Savings Bank of Los Angeles, Title Insurance and Trust Co. • Tract No. 3837 (1920) <ul style="list-style-type: none"> ○ [illegible] • Tract No. 6469 (1923) <ul style="list-style-type: none"> ○ [illegible]

QUESTIONS?



HISTORIC RESOURCES GROUP