

City of Alhambra Citywide Historic Context Statement *March 14, 2022*

HISTORIC RESOURCES GROUP

PROJECT TEAM

- **Historic Resources Group (HRG)**
 - Heather Goers, Senior Architectural Historian
 - Molly Iker-Johnson, Architectural Historian/Staff Photographer
 - Robby Aranguren, Planning Associate/GIS Specialist
 - Ani Mnatsakanyan, Associate Architectural Historian
 - Christine Lazzaretto, Managing Principal

HISTORIC RESOURCES GROUP



HISTORIC CONTEXT STATEMENT: PHASE I

- Represents the first step in establishing a comprehensive historic preservation program
- Subsequent steps include:
 - Completion of a Historic Resources Survey
 - Development of a Historic Preservation Ordinance



WHAT IS A HISTORIC CONTEXT STATEMENT?

A *historic context statement* is a written report that provides a narrative historical overview of the broad patterns of events and trends that have shaped land use patterns and the development of the built environment in the City.

- Developed using guidance established by the National Park Service and the California State Office of Historic Preservation for conducting historic resource studies
- Is not intended to be a comprehensive history of a community; rather, its purpose is to highlight trends and patterns critical to the understanding of the built environment
- Establishes baseline documentation to inform subsequent phases of the project and guide future planning/land use decision-making related to potential historic resources
- Provides a framework for the future evaluation of potential historic resources

HISTORIC RESOURCES GROUP



WHAT IS A HISTORIC CONTEXT STATEMENT?

- Does not result in the identification of potential historic resources
- Does not result in the designation of properties as historic resources
- Does provide information to aid in the *future* identification of potential historic resources
- Does include documentation that may serve as a basis for future survey efforts undertaken as a subsequent phase of the project



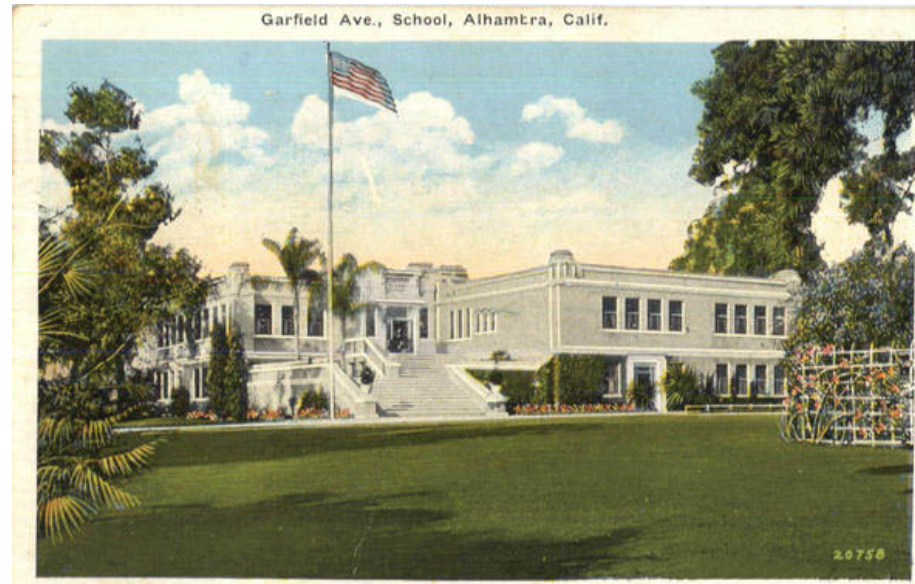
HISTORIC CONTEXT STATEMENTS: SCOPE & ORGANIZATION

- Documents the history and development of the area that currently lies within Alhambra's city limits
- Addresses each significant phase of the city's development as it relates to the existing built environment
- Organized into chronological periods, which are subdivided into themes based on different historical associations or types of development

Christian Science Church, Alhambra, Calif.



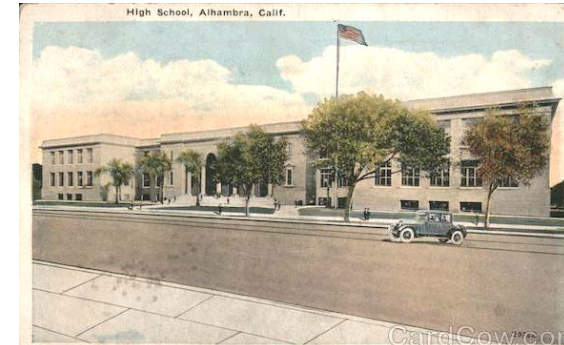
Garfield Ave., School, Alhambra, Calif.



HISTORIC CONTEXT STATEMENTS: SCOPE & ORGANIZATION

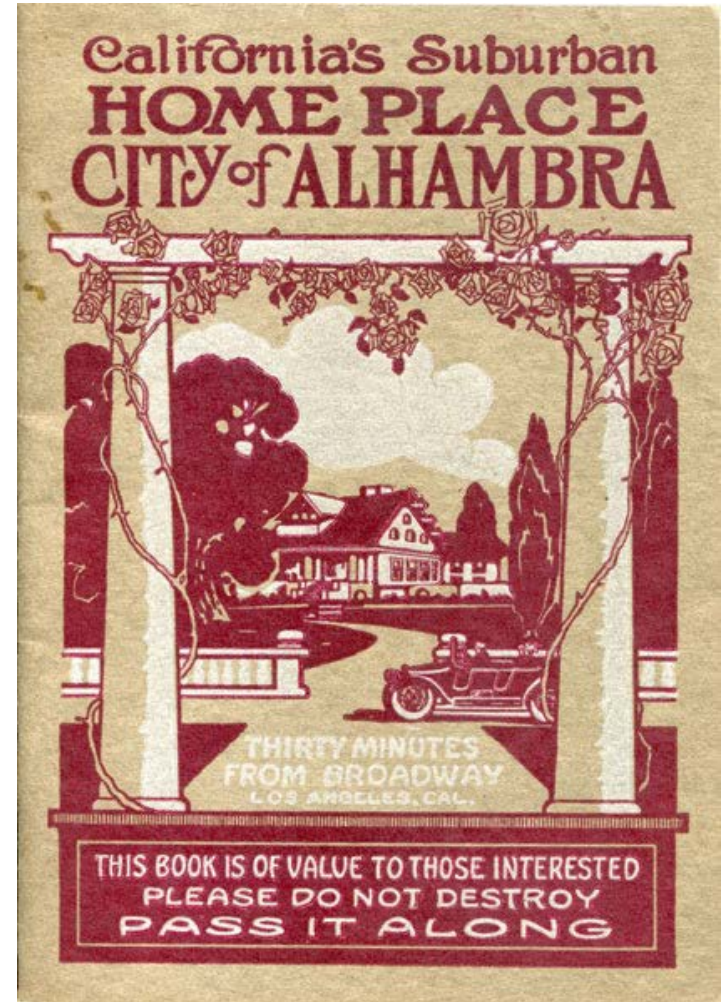
- Native American Settlement
- European Exploration (1542-1768)
- Spanish Rule (1769-1820)
- Mexican Rule (1821-1849)
- Early California (1850-1874)
- **Early Development of Alhambra (1875-1902)**
- **City Incorporation and Civic Improvement (1903-1919)**
- **City Expansion and Industrial Growth (1920-1940)**
- **Alhambra During World War II (1941-1945)**
- **Postwar Growth and Prosperity (1946-1967)**
- **Postwar Decline & Redevelopment (1968-1980)**
- Alhambra Today (1981-present)
- Architecture & Design (1875-1980)

HISTORIC RESOURCES GROUP



HISTORIC RESOURCES

- A *historic resource* is a building, structure, object, site, landscape or a related grouping or collection of these that is significant in American history, architecture, archeology, engineering, or culture
- Groupings or collections of historic resources are known as *historic districts*
- A historic resource must possess both *historic significance* and *historic integrity* to qualify for designation



HISTORIC SIGNIFICANCE

- *Historic significance* is the importance of a property to the history, architecture, engineering, or culture of a community
- It is achieved through:
 - Association with important events, activities or patterns
 - Association with important persons
 - Distinctive physical characteristics of design, construction, or form
 - Potential to yield important information
- Development of a historic context statement aids in determining the historic significance of a property



HISTORIC INTEGRITY

- *Historic integrity* is the ability of a property to convey its significance and is defined as the “authenticity of a property’s historic identity, evidenced by the survival of physical characteristics that existed during the property’s historic period”
- Physical features that date from the property’s period of significance and convey its historic character and significance are known as *character-defining features*



QUESTIONS?



HISTORIC RESOURCES GROUP

ADDITIONAL INFORMATION

National Register Bulletin 15: How to Apply the National Register Criteria for Evaluation

https://www.nps.gov/subjects/nationalregister/upload/NRB-15_web508.pdf

National Register Bulletin 16A: How to Complete the National Register Registration Form

<https://www.nps.gov/subjects/nationalregister/upload/NRB16A-Complete.pdf>

National Register Bulletin 32: Guidelines for Evaluating and Documenting Properties Associated with Significant Persons

<https://www.nps.gov/subjects/nationalregister/upload/NRB32-Complete.pdf>

National Register Bulletin 16B: how to Complete the National Register Multiple Property Documentation Form

<https://www.nps.gov/subjects/nationalregister/upload/NRB16B-Complete.pdf>

National Register Bulletin 24: Guidelines for Local Surveys: A Basis for Preservation Planning (Part 1)

https://www.nps.gov/subjects/nationalregister/upload/NRB24-Complete_Part1t.pdf

National Register Bulletin 24: Guidelines for Local Surveys: A Basis for Preservation Planning (Part 2)

https://www.nps.gov/subjects/nationalregister/upload/NRB24-Complete_Part2.pdf

California Office of Historic Preservation – Instructions for Recording Historical Resources

<https://ohp.parks.ca.gov/pages/1054/files/manual95.pdf>

HISTORIC DESIGNATION AND REGISTRATION PROGRAMS

- A historic resource may be designated if it meets at least one of the criteria for historic significance *and* possesses sufficient integrity to convey its significance.
- A historic resource may be designated at the national, state, or local level through one of the following registration programs:
 - National Register of Historic Places
 - California Register of Historical Resources
 - Local Designation Program (if present)
- Development of a historic context statement or historic resources survey does NOT automatically designate a property.
- Designation as a historic resource requires a formal nomination and review process.

NATIONAL REGISTER OF HISTORIC PLACES

The criteria for listing in the National Register follow established guidelines for determining the significance of properties. The quality of significance in American history, architecture, archeology, engineering, and culture is present in districts, sites, buildings, structures, and objects:

- A. That are associated with events that have made a significant contribution to the broad patterns of our history; or
- B. That are associated with the lives of persons significant in our past; or
- C. That embody the distinctive characteristics of a type, period, or method of construction, or that represent the work of a master, or that possess high artistic values, or that represent a significant and distinguishable entity whose components may lack individual distinction; or
- D. That have yielded, or may be likely to yield, information important in prehistory or history.

CALIFORNIA REGISTER OF HISTORICAL PLACES

The criteria for eligibility for listing in the California Register are based upon National Register criteria. These criteria are:

1. Associated with events that have made a significant contribution to the broad patterns of local or regional history or the cultural heritage of California or the United States
2. Associated with the lives of persons important to local, California or national history
3. Embodies the distinctive characteristics of a type, period, region or method of construction or represents the work of a master or possesses high artistic values
4. Has yielded, or has the potential to yield, information important to the prehistory or history of the local area, California or the nation

ASPECTS OF INTEGRITY

The National Park Service defines seven aspects of integrity. These are:

- **Location** is the place where the historic property was constructed or the place where the historic event took place.
- **Design** is the combination of elements that create the form, plan, space, structure, and style of a property.
- **Setting** is the physical environment of a historic property.
- **Materials** are the physical elements that were combined or deposited during a particular period of time and in a particular pattern or configuration to form a historic property.
- **Workmanship** is the physical evidence of the crafts of a particular culture or people during any given period in history or prehistory.
- **Feeling** is a property's expression of the aesthetic or historic sense of a particular period of time.
- **Association** is the direct link between an important historic event or person and a historic property.