



City of Alhambra Citywide Historic Context Statement *October 13, 2021*

HISTORIC RESOURCES GROUP

PROJECT TEAM

- **Historic Resources Group (HRG)**

- Heather Goers, Senior Architectural Historian
- Molly Iker-Johnson, Architectural Historian/Staff Photographer
- Robby Aranguren, Planning Associate/GIS Specialist
- Ani Mnatsakanyan, Intern
- Christine Lazzaretto, Managing Principal

HISTORIC RESOURCES GROUP



HISTORIC CONTEXT STATEMENT: PHASE I

- Represents the first step in establishing a comprehensive historic preservation program
- Subsequent steps include:
 - Establishment of Historic Resources Commission
 - Completion of Historic Resources Survey
 - Development of a Historic Preservation Ordinance



HISTORIC CONTEXT STATEMENT: SCOPE OF WORK

- Narrative Historic Context Statement
- Windshield Survey of all properties built through 1980
- Community Outreach Program



WHAT IS A HISTORIC CONTEXT STATEMENT?

- The purpose of a historic context statement is to place built resources in the appropriate historic, social, and architectural context so that the relationship between an area's physical environment and its broader history can be established.



LOOKING WEST ON MAIN STREET, ALHAMBRA, CALIFORNIA.

WHAT IS A HISTORIC CONTEXT STATEMENT?

- A historic context statement is not intended to be a comprehensive history. Rather, its purpose is to highlight trends and patterns critical to the understanding of the built environment.

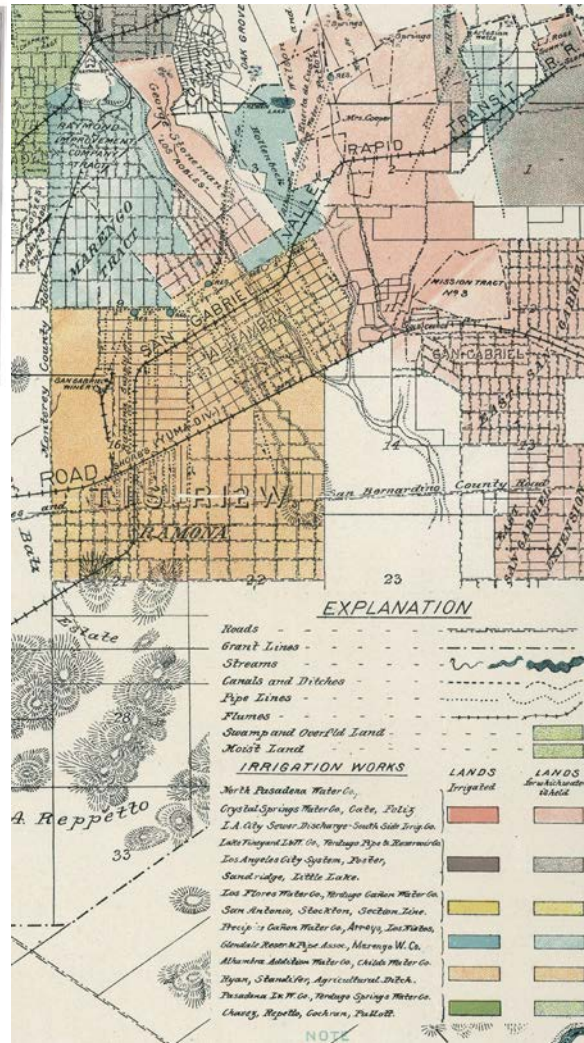
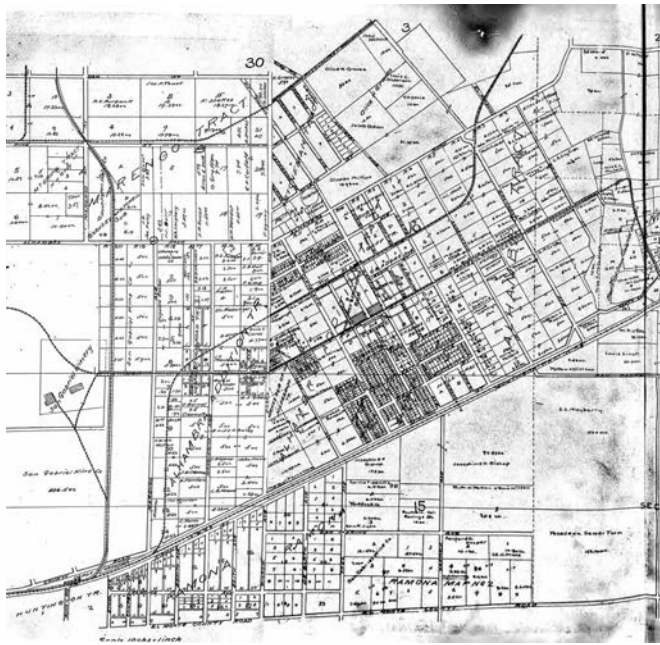
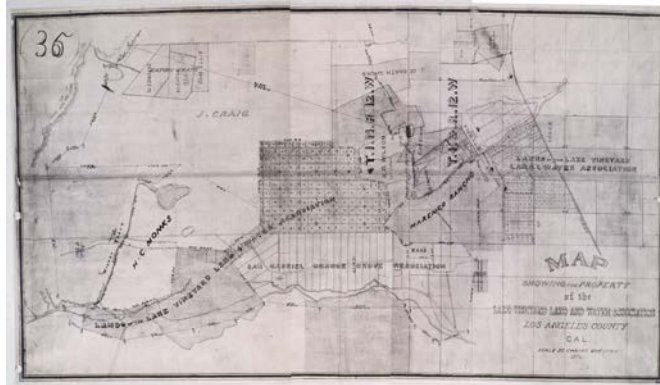


DAILY CROWDS AT BATHING POOL, CITY PARK, ALHAMBRA, CALIFORNIA.

HISTORIC CONTEXT STATEMENT: RESEARCH METHODOLOGY

- Primary and secondary literature review of published and online sources for information regarding broad patterns of development and potentially significant properties in Alhambra
 - Margaret E. Lee, “The History of Alhambra to 1915”
- Existing City of Alhambra surveys and assessments
 - *Alhambra Historic and Cultural Resources Survey, 1984-1985*
- Historical property maps, including county assessor maps, atlas maps, fire insurance maps, irrigation maps, land ownership and patent maps, rail maps, and tract maps
- Historical photographs and aerial photographs

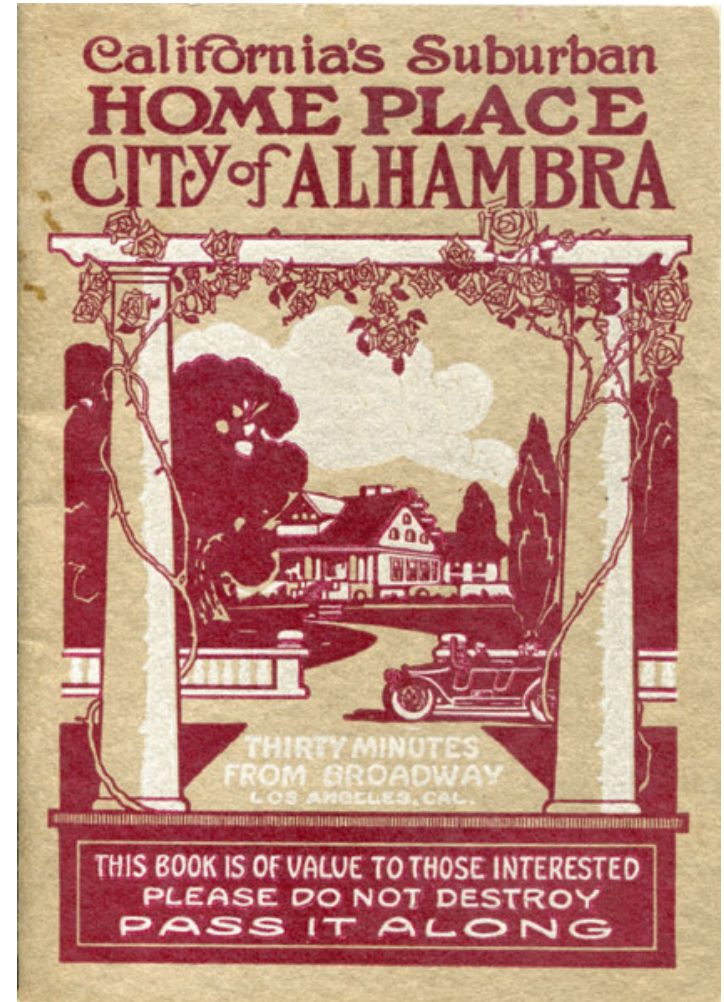
HISTORIC CONTEXT STATEMENT: RESEARCH METHODOLOGY



HISTORIC RESOURCES GROUP

HISTORIC CONTEXT STATEMENT: CONTEXT SCOPE

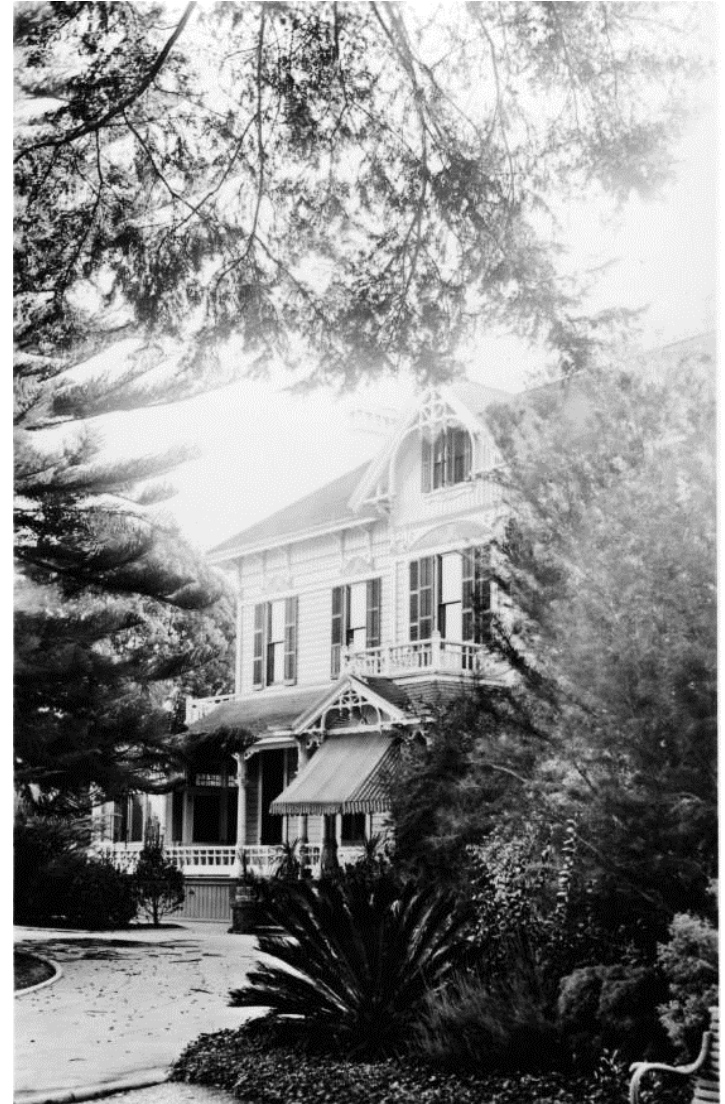
- Historical trends and patterns of development activity
- All chronological periods of development (1875-1980)
- All property types (residential, commercial, industrial, institutional)



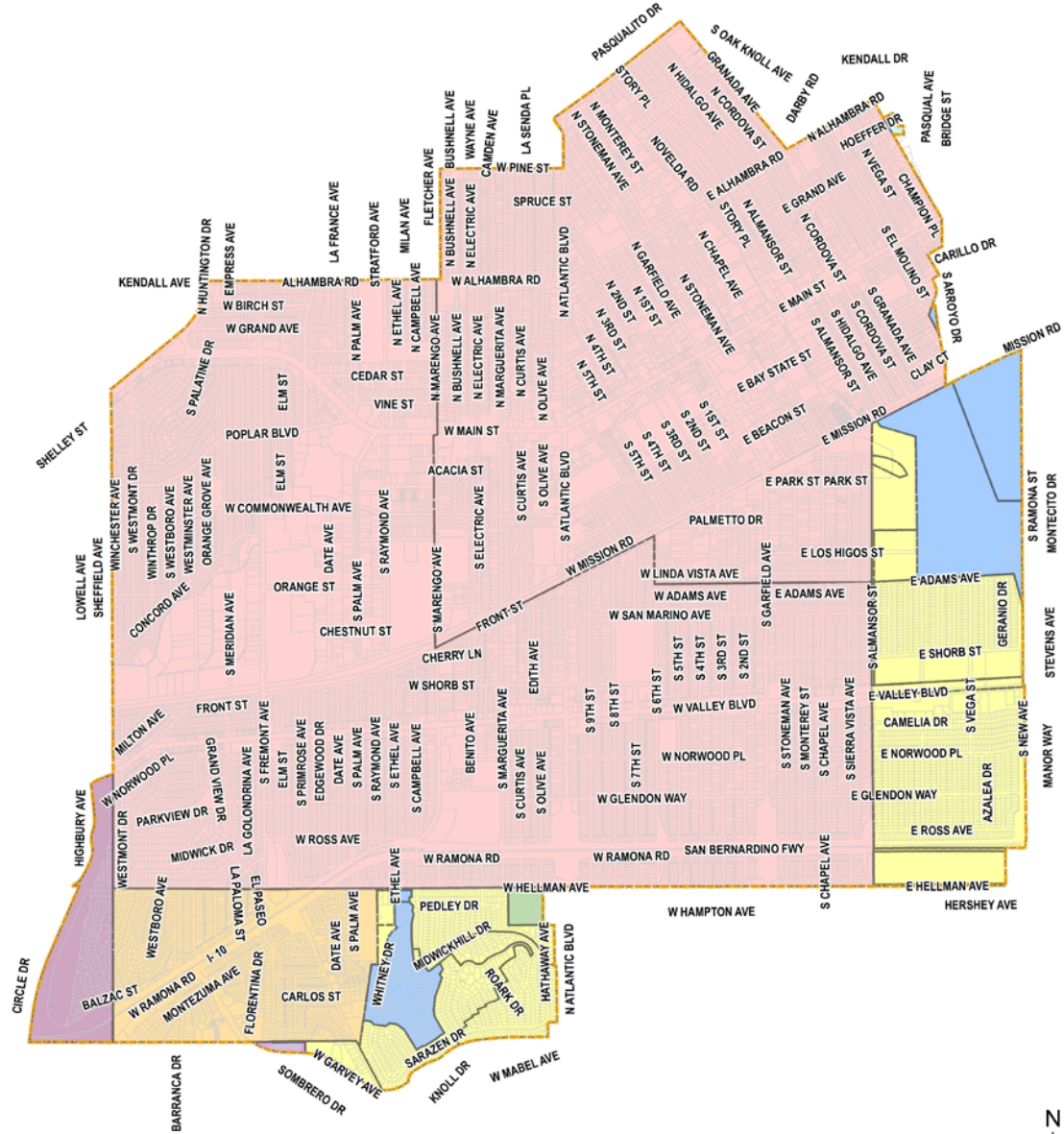
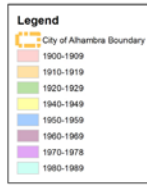
HISTORIC CONTEXT STATEMENT: DRAFT THEMES

- Native American Settlement and European Exploration
- Spanish and Mexican Rule
- Early California
- Early Development of Alhambra
- City Incorporation and Civic Improvement
- City Expansion and Industrial Growth
- Alhambra During World War II
- Postwar Growth and Prosperity
- Postwar Decline & Redevelopment

HISTORIC RESOURCES GROUP



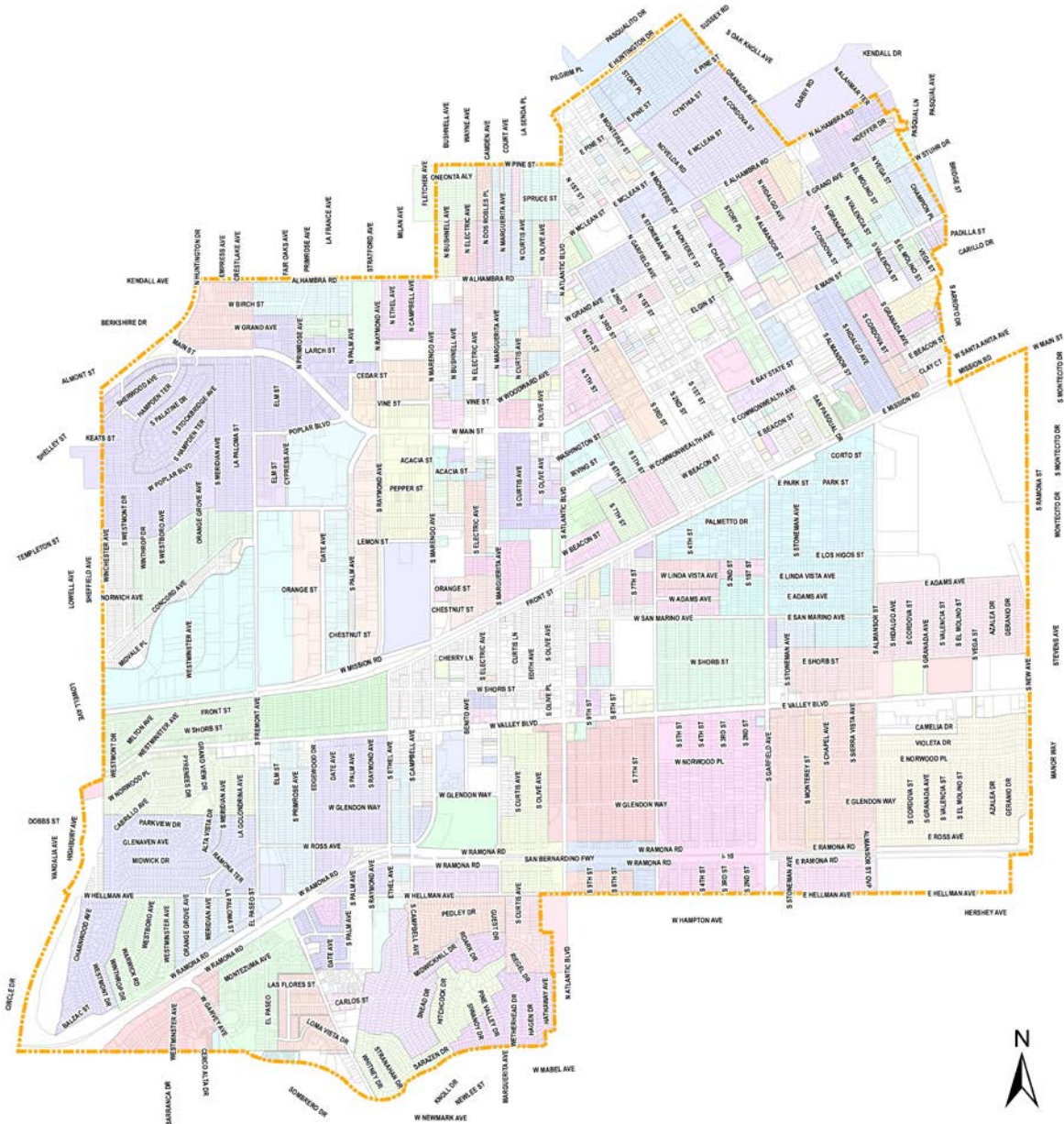
DEVELOPMENT IN ALHAMBRA BY ANNEXATION



HISTORIC RESOURCES GROUP



DEVELOPMENT IN ALHAMBRA BY TRACT



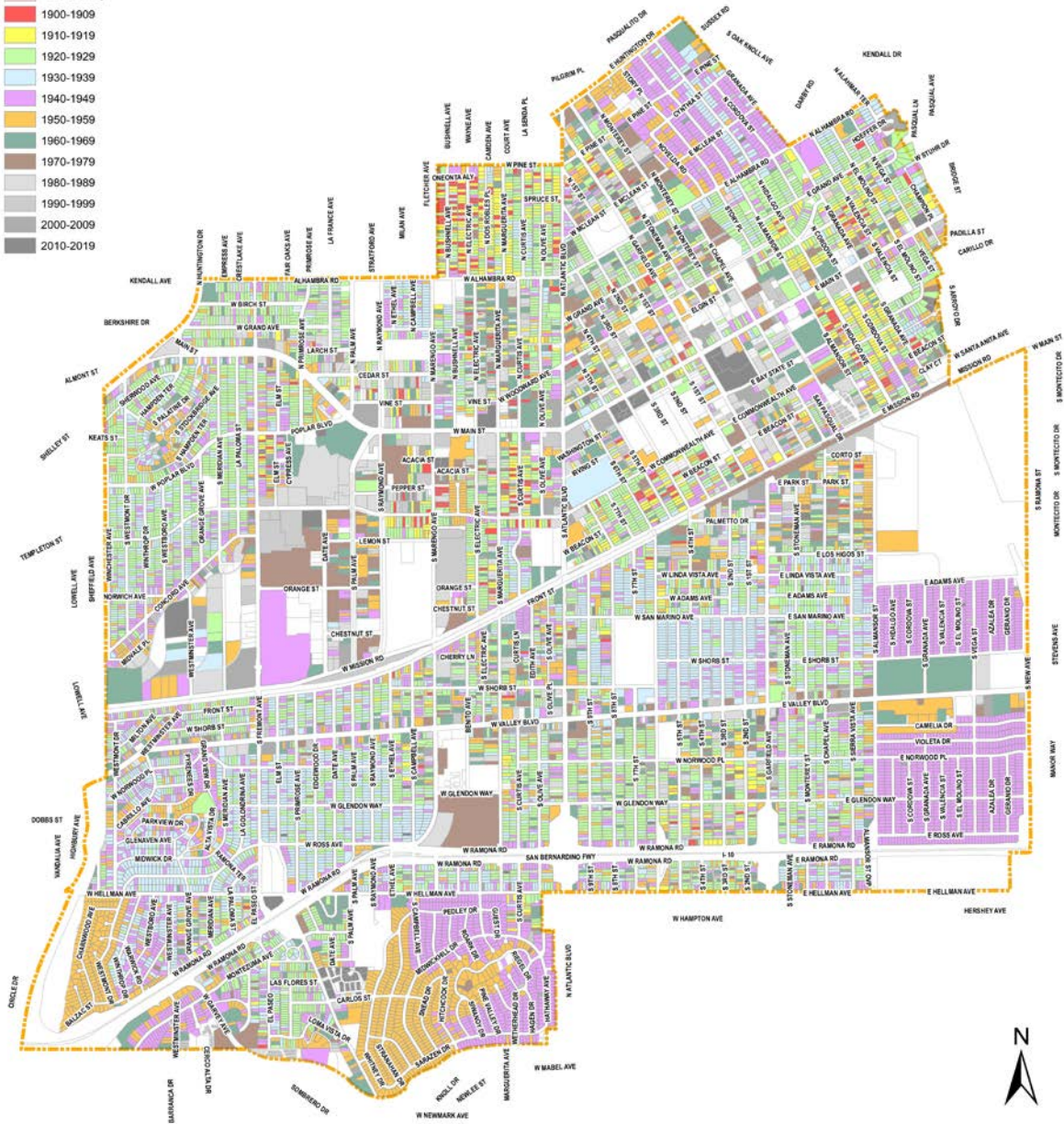
HISTORIC RESOURCES GROUP



DEVELOPMENT IN ALHAMBRA BY DECADE

Legend

- City of Alhambra Boundary
- No Year Built Information
- 19th Century
- 1900-1909
- 1910-1919
- 1920-1929
- 1930-1939
- 1940-1949
- 1950-1959
- 1960-1969
- 1970-1979
- 1980-1989
- 1990-1999
- 2000-2009
- 2010-2019



PRELIMINARY WINDSHIELD SURVEY STUDY MAP

Legend

- City of Alhambra Boundary
- Parcels
- Potential Resource
- Potential Historic District or Neighborhood

Alhambra Neighborhoods

1. La Marguerita-Souders Tracts
2. Alhambra Park
3. Olive Avenue
4. Bean Tract
5. Lindaraxa Park
6. Alhambra Tract
7. Emery Park
8. Alhambra Vista Tract
9. San Pasqual Drive
10. Carpenter-Nathanson Tracts
11. Mayfair Park
12. Martha Baldwin
13. Almanson Park 26
14. West Shorb
15. Midwick Park / Alhambra Hills
16. East Shorb
17. Ethel Park
18. West Ramona
19. East Ramona
20. East Ramona Park
21. Airport Tract
22. Granada Park
23. South Ramona
24. Midwick Tract
25. Emery Park Hills
26. Alhambra Hills Tract



MAJOR DEVELOPMENT PERIODS

- Early Development of Alhambra (1875-1902)
- City Incorporation and Civic Improvement (1903-1919)
- City Expansion and Industrial Growth (1920-1940)
- Alhambra During World War II (1941-1945)
- Postwar Growth and Prosperity (1946-1967)
- Postwar Decline and Redevelopment (1968-1980)

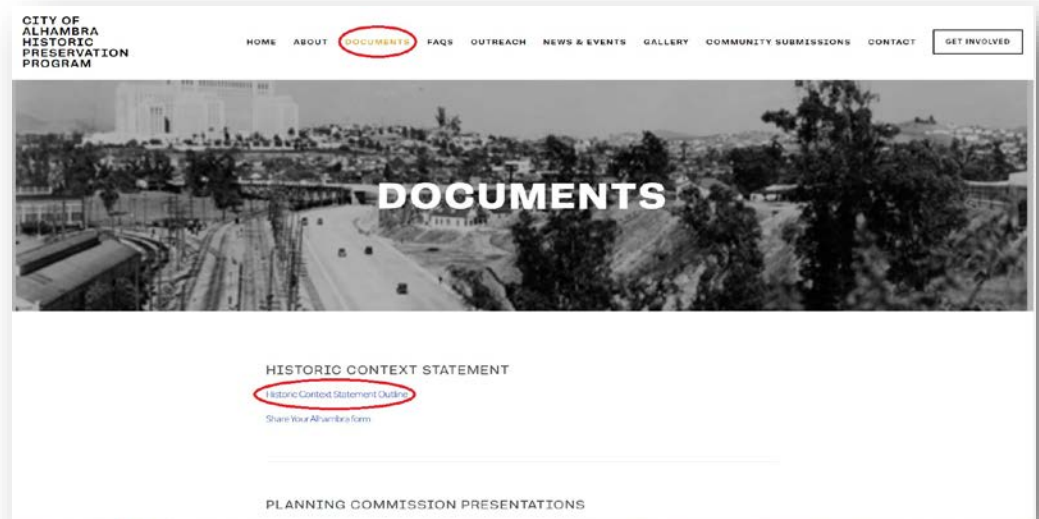
HISTORIC RESOURCES GROUP



NEXT STEPS

- Now: Draft historic context statement outline available for public review
- Mid-November: Release of draft historic context statement for public review
- Early December: Outreach Meeting #2
- December/January: Revise draft based on public input
- Mid-January: Presentation of updated historic context statement

HISTORIC RESOURCES GROUP



NEXT STEPS

← → ↻ 🔒 https://www.historicalhambra.com 🔍 ☆ 📄 🗑️ Not syncing

CITY OF ALHAMBRA HISTORIC PRESERVATION PROGRAM

HOME ABOUT DOCUMENTS FAQS OUTREACH NEWS & EVENTS GALLERY COMMUNITY SUBMISSIONS CONTACT GET INVOLVED

CITY OF ALHAMBRA HISTORIC PRESERVATION PROGRAM

[LEARN MORE](#)

We are excited to launch the development of the City of Alhambra's Historic Preservation Program! This process includes three phases:

- Phase 1:** Historic Context Statement
- Phase 2:** Historic Resources Survey and establishment of Historic Preservation Commission
- Phase 3:** Historic Preservation Ordinance

The City is currently working with Historic Resources Group on Phase 1, the preparation of the City's first comprehensive, citywide historic context statement.

Join us for our first (virtual) public outreach meeting!

October 13, 2021 | 6 pm PDT

Learn more about Phase 1 of the Historic Preservation Program project, and tell us about the people, places, and stories that are important to you!

TO JOIN THE WEBINAR, CLICK THE LINK BELOW:

<https://cityofalhambracommunity.submittable.com/submit/2021-10-13-6pm-PDT>

Passcode: 340954

OR, TO JOIN BY TELEPHONE:

Dial (for higher quality, dial an area based on your current location):

US: (772) 325-7125 (toll free) or (888) 475-4889 (toll free) or (823) 548-0295 (toll free) or (823) 548-0297 (toll free)

Webinar ID: (844) 729-3670 | Passcode: 340954

Submit your feedback on the Draft Historic Context Statement Outline!

View the Draft Historic Context Statement Outline here. The comment period is open through October 27, 2021.

We would love to hear from you! Get involved and tell us about the people, places, and stories that are important to you.

HISTORIC RESOURCES GROUP

WE WANT TO HEAR FROM YOU!

- What sites or buildings have traditionally served as gathering places or focal points in your community?
- What people or places shaped social movements or the cultural evolution of your community?
- Who are the important people in Alhambra's history? Where did they live and work?
- Which buildings and districts may have been associated with important architects, builders, designers, developers or engineers whose work helped define the character of Alhambra?
- What are the neighborhoods, commercial areas, and landscapes that have distinctive architectural or cultural characteristics, or reflect important aspects of social history or planning and development? What qualities of these places make them important and unique?

HISTORIC RESOURCES GROUP



Some More of Alhambra's Boosters

STAY IN TOUCH!

- Learn more about the project or submit a suggestion at www.HistoricAlhambra.com
- Contact the City at: historicalhambra@cityofalhambra.org
- Find us on the City's social media:



www.facebook.com/cityofalhambra



[@cityofalhambra](https://www.instagram.com/cityofalhambra)



[@cityofalhambra](https://twitter.com/cityofalhambra)

HISTORIC RESOURCES GROUP

CITY OF ALHAMBRA HISTORIC PRESERVATION PROGRAM

HOME ABOUT DOCUMENTS FAQS OUTREACH NEWS & EVENTS GALLERY COMMUNITY SUBMISSIONS CONTACT **GET INVOLVED**

GET INVOLVED

Help the City of Alhambra Planning Division by telling us about people, places, and stories that matter to you!

We are particularly interested in the lesser-known places that shaped our community. These places may be important for a broad range of reasons, including architecture or landscape design, association with an important person, social, cultural and/or ethnic heritage, residential development, commerce or industry.

PRINT THE FORM AND MAIL IT TO US
Download the form →

COMPLETE THE FORM ONLINE
Fill out the form →

SEE WHAT'S BEEN SUBMITTED
See what your neighbors told us about →

QUESTIONS?



HISTORIC RESOURCES GROUP