



City of Alhambra Citywide Historic Resources Survey

September 27, 2023 - Community Meeting

HISTORIC RESOURCES GROUP



Architectural
Resources Group

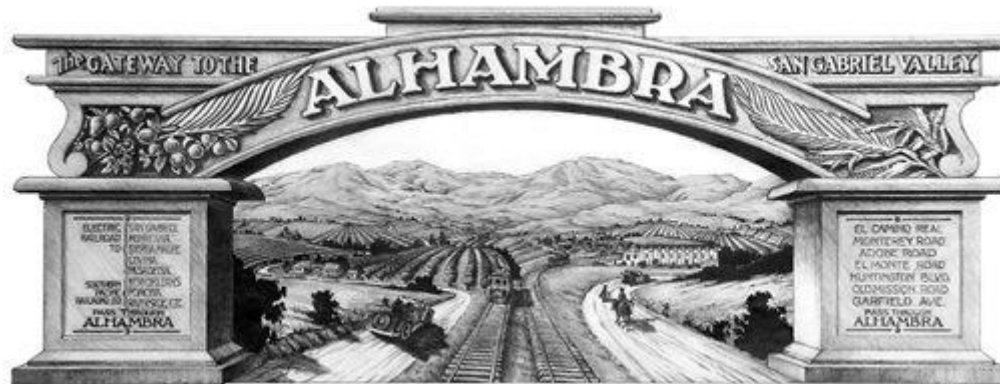
Overview

- Team Introduction
- Project Purpose and Timeline
- Previous Work
- Survey Methodology
- Draft Recommendations
 - Potentially Eligible Individual Properties
 - Potential Historic Districts
- What's Next
- Feedback/Q&A



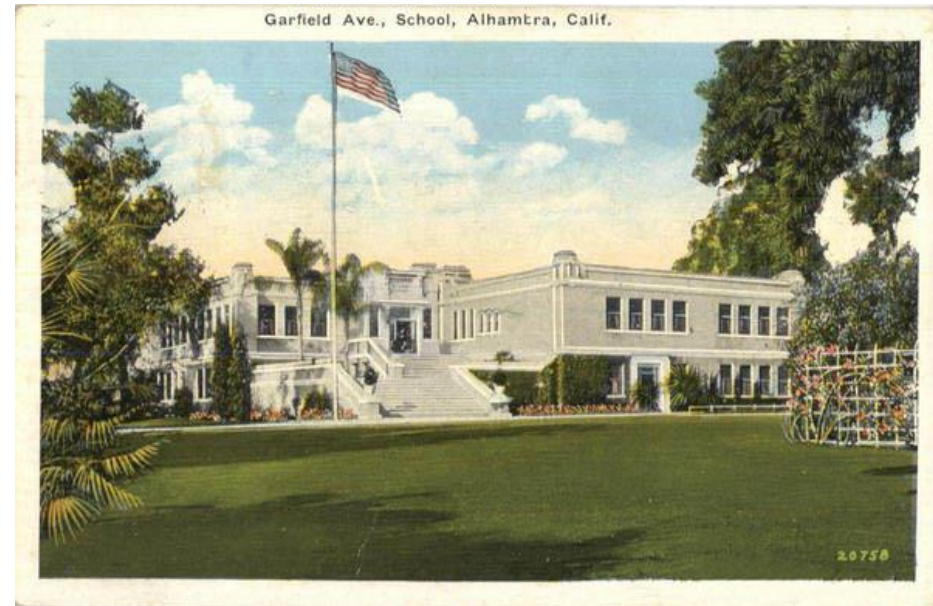
Project Team

- **Historic Resources Group (HRG)**
 - Christine Lazzaretto, Managing Principal
 - Alexandra Perlman, Senior Architectural Historian
 - Robby Aranguren, Planning Associate/GIS Specialist
- **Architectural Resources Group (ARG)**
 - Katie Horak, Principal
 - Mary Ringhoff, Senior Associate



Project Components and Timeline

- Phase I: Historic Context Statement
 - Completed in 2022
- Phase II: Citywide Survey
 - Ongoing, 2023
- Phase III: City Historic Preservation Ordinance
 - Upcoming, 2024



Background: Previous Work

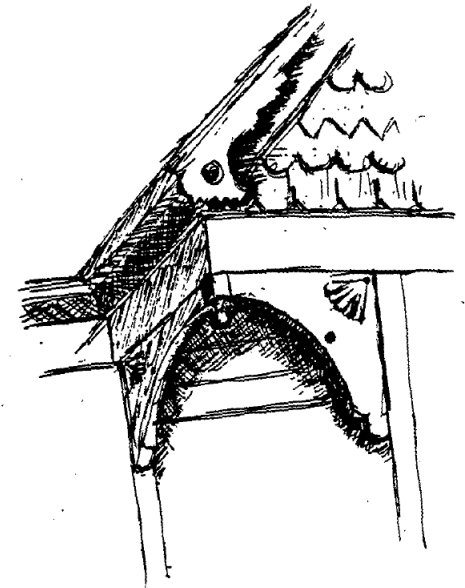
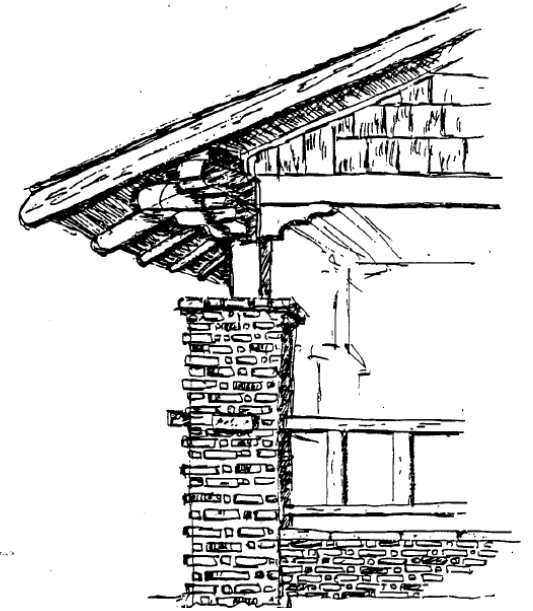
1980: Survey of Downtown Redevelopment Area

- Potentially historic properties in the Central Business District

1984-1985: Survey

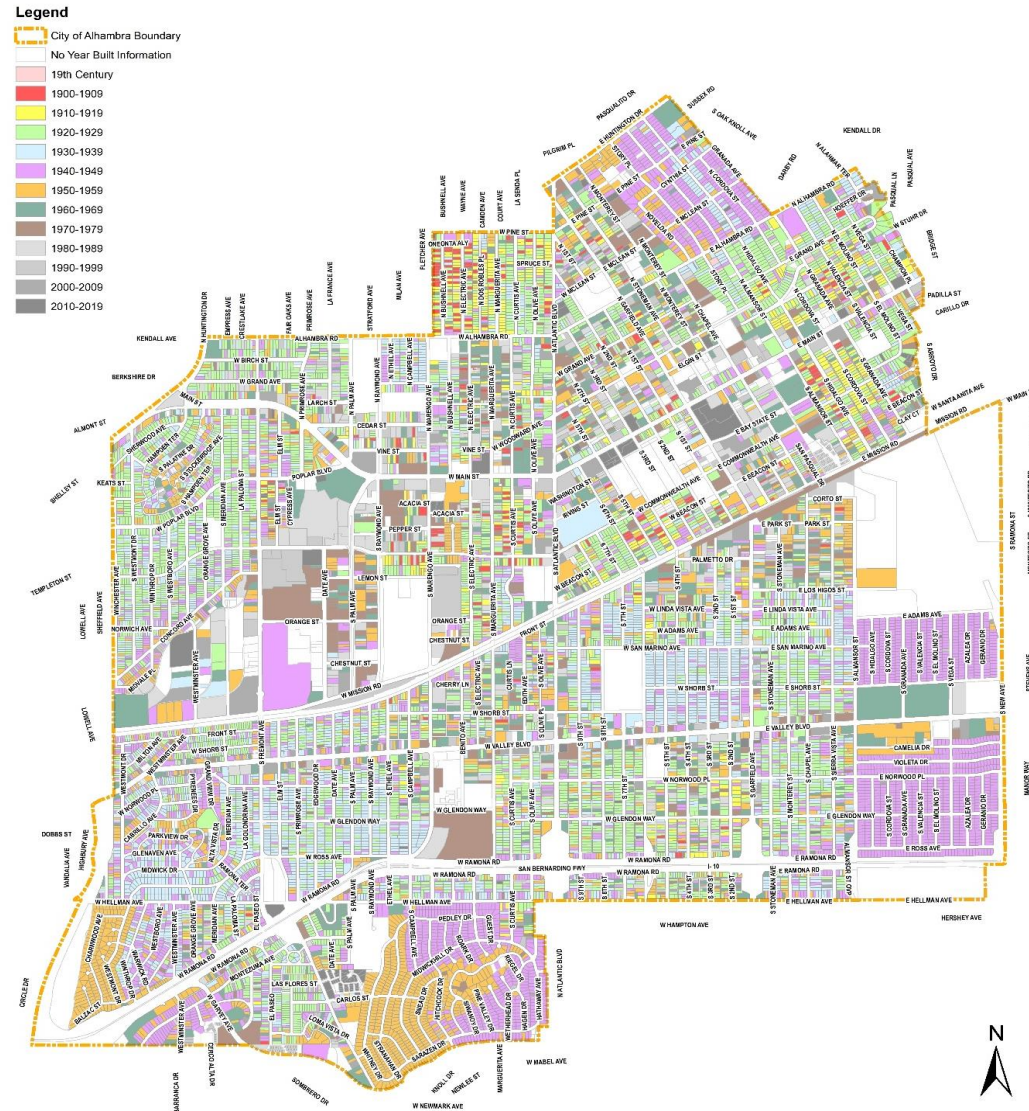
- Funded by California OHP
- Focused on early residential development
- Documented 600+ properties
 - 2 historic districts
 - 34 individual properties

Ongoing: Alhambra Preservation Group & Alhambra Historical Society



Survey Methodology

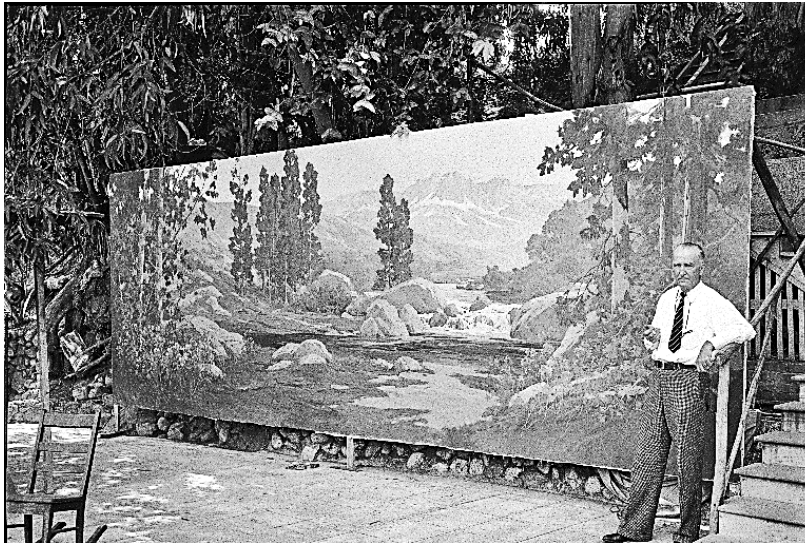
- Review existing studies and surveys
- Prepare database and maps
- Preliminary reconnaissance of all 14,000+ parcels (1980)
- Property-specific research
- Intensive survey
- Documentation*



*All fieldwork conducted from the public right-of-way

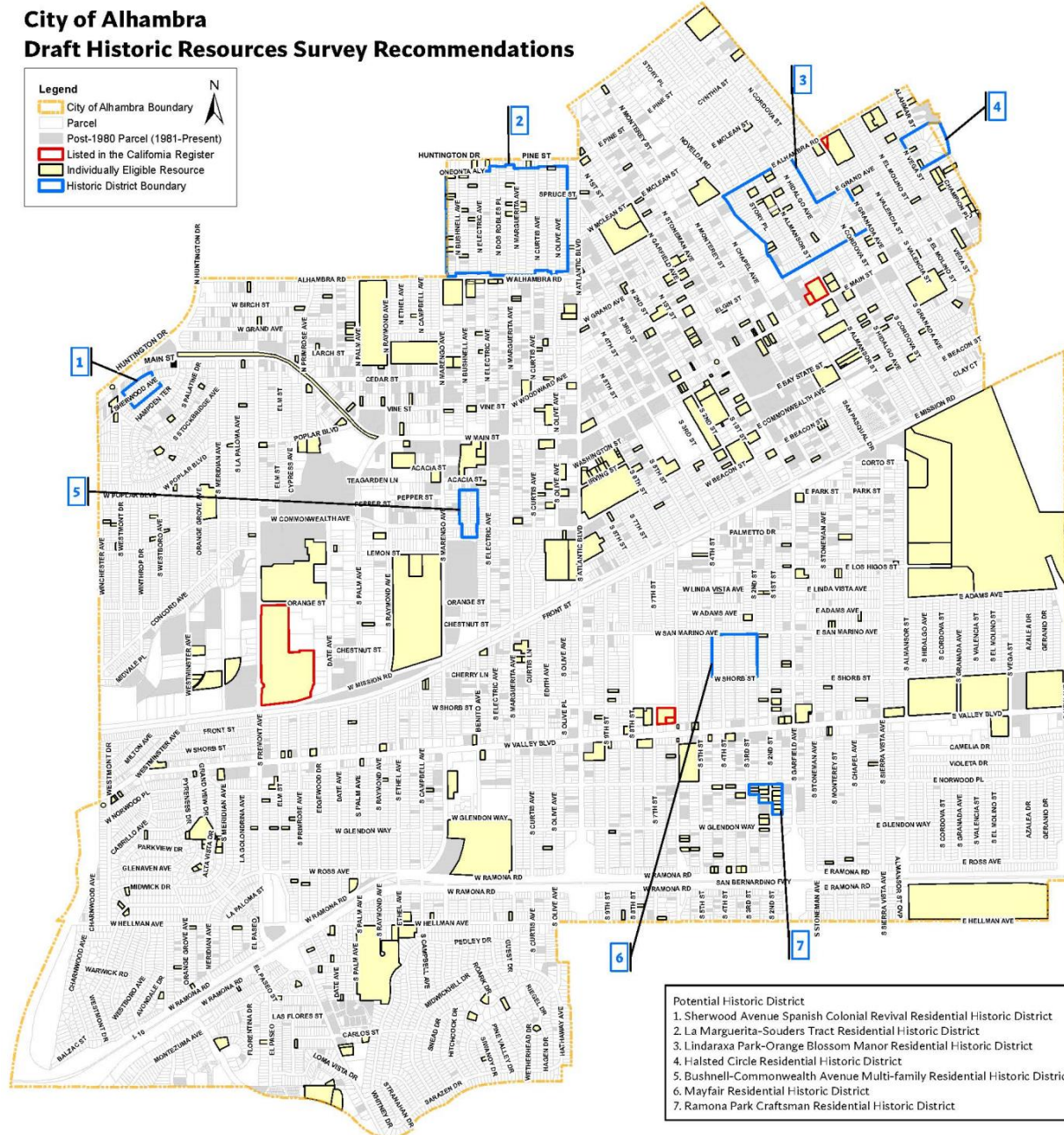
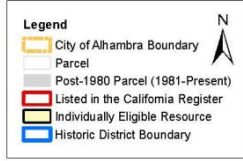
Initial Draft Recommendations: Overview

- **346** properties potentially individually eligible;
- **409** properties appear eligible as contributors to potential historic districts; and
- **40** properties appear potentially eligible both individually and as contributors to potential historic districts.
- Potential adoption of survey recommendations pending development of a local **ordinance** in the next phase.



Draft Recommendations: Overview

City of Alhambra Draft Historic Resources Survey Recommendations



- Potential Historic District
1. Sherwood Avenue Spanish Colonial Revival Residential Historic District
 2. La Marguerita-Souders Tract Residential Historic District
 3. Linderaxa Park-Orange Blossom Manor Residential Historic District
 4. Halsted Circle Residential Historic District
 5. Bushnell-Commonwealth Avenue Multi-family Residential Historic District
 6. Mayfair Residential Historic District
 7. Ramona Park Craftsman Residential Historic District

Potentially Eligible Individual Properties

City of Alhambra Draft Historic Resources Survey Recommendations



Individuals – Architectural Style/Property Type



Individuals – Association with Important Person



Individuals – Association with Events/Patterns



Individuals – Infrastructure & Amenities

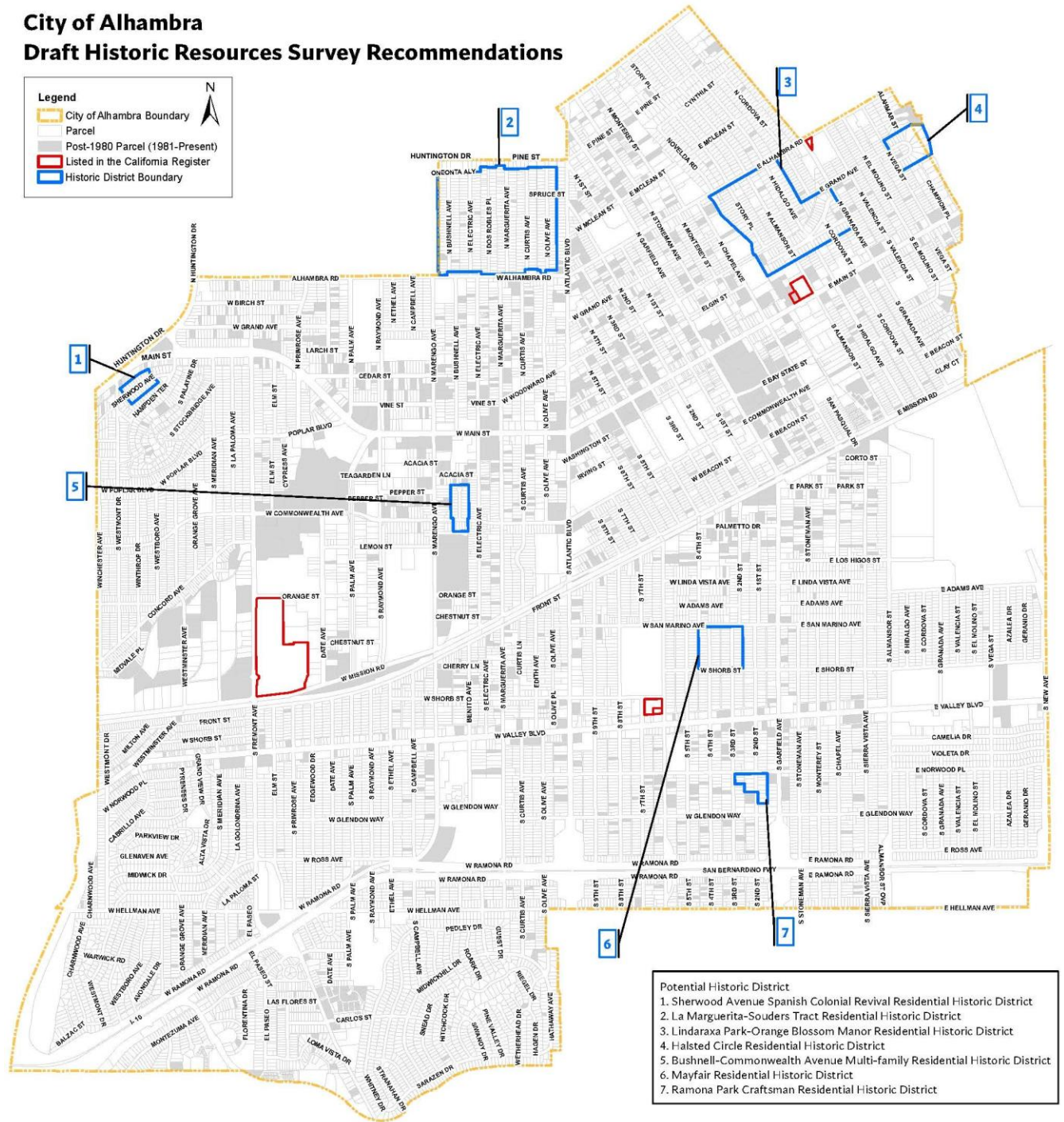


Potentially Eligible Historic Districts

City of Alhambra Draft Historic Resources Survey Recommendations

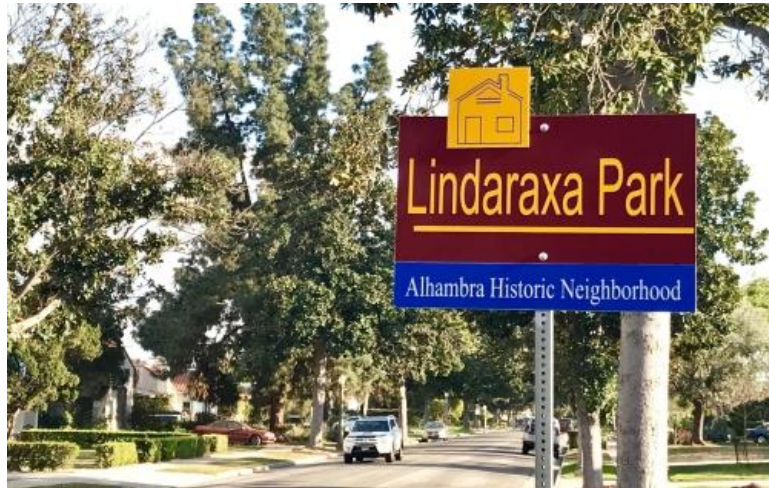
Legend

- City of Alhambra Boundary
- Parcel
- Post-1980 Parcel (1981-Present)
- Listed in the California Register
- Historic District Boundary



- Potential Historic District
1. Sherwood Avenue Spanish Colonial Revival Residential Historic District
 2. La Marguerita-Souder Tract Residential Historic District
 3. Lindaraxa Park-Orange Blossom Manor Residential Historic District
 4. Halsted Circle Residential Historic District
 5. Bushnell-Commonwealth Avenue Multi-family Residential Historic District
 6. Mayfair Residential Historic District
 7. Ramona Park Craftsman Residential Historic District

Historic Neighborhoods vs. Potential Historic Districts



Potential Districts – Association with Events/Patterns



La Marguerita-Souders Tract Potential Residential Historic District



Halsted Circle Potential Residential Historic District



Potential Districts – Notable for Architecture



Lindaraxa Park-Orange Blossom Manor Potential Residential Historic District



Mayfair Potential Residential Historic District



Sherwood Avenue Spanish Colonial Revival Potential Residential Historic District

Potential Districts – Significant Development Periods

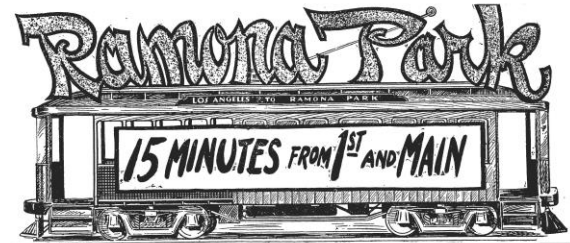


Ramona Park Craftsman Potential Residential Historic District



Bushnell-Commonwealth Avenue Potential Multi-Family Residential Historic District

Display Ad 91 – No Title
 Los Angeles Times (1886-1922); Apr 14, 1907; ProQuest Historical Newspapers: Los Angeles Times
 Pg. 1117



Free Excursions Today

Free Tickets at Althouse Bros.' Office Up to 2 P. M. Today
 Join the Throngs Who Are Going to Ramona Park Townsite

Lots \$450 Up

1-4 Cash; Easy
 Terms on Balance

Big \$10,000 mercantile
 establishment, now
 building. Several artistic
 2-story residences
 and handsome bungalows
 to be built immediately.

Largest nursery in state
 will furnish the trees
 and shrubs.

\$100,000 In Street Improvements

Covina Electric Line now being rushed to completion, will when completed, double present prices of lots. The only low-priced property available in this aristocratic district. The very cream of the beautiful San Gabriel Valley. Dozens of properties with not half the advantages of Ramona Park are quoted at nearly double our prices. All the public improvements and utilities of the city. Mountain and Valley Views unsurpassed in Southern California.

This ideal property is owned and backed by Althouse Bros., one of the most substantial real estate firms in California.

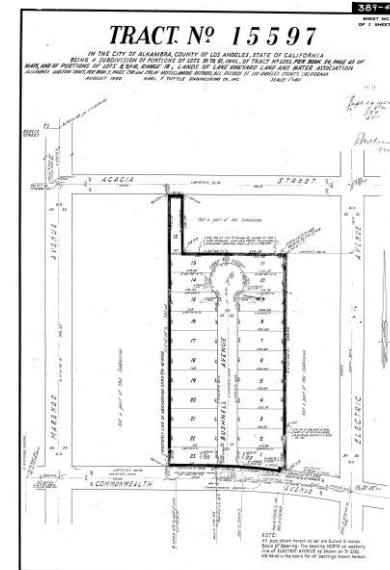
No high-class district suburban to Los Angeles offers such low priced property.

Free excursions will also prevail all next week.
 But go today—the choicest locations will be GONE next week.

Althouse Bros. and Arnold & Dodge

Telephone: HOME 25, 41
 ALBANY, Bldg. 20
 BUTTERBAUGH REALTY CO., TRACT AGENTS AT ALHAMBRA

Reproduced with permission of the copyright owner. Further reproduction prohibited without permission.



What Happens Next

- Learn more about the project or submit a comment at www.HistoricAlhambra.com
- Contact the City at: historicalhambra@cityofalhambra.org

The screenshot shows the website for the City of Alhambra Historic Preservation Program. The header includes the city name and a navigation menu with links for HOME, ABOUT, DOCUMENTS, FAQs, OUTREACH, NEWS & EVENTS, GALLERY, COMMUNITY SUBMISSIONS, CONTACT, and GET INVOLVED. The main content area features a large 'GET INVOLVED' heading over a historical street scene. Below this, a text block asks visitors to help the City of Alhambra Planning Division by sharing information about local history. At the bottom, three buttons are provided: 'PRINT THE FORM AND MAIL IT TO US', 'COMPLETE THE FORM ONLINE', and 'SEE WHAT'S BEEN SUBMITTED'. The 'GET INVOLVED' link in the header and the first two buttons are circled in red in the original image.

CITY OF ALHAMBRA HISTORIC PRESERVATION PROGRAM

HOME ABOUT DOCUMENTS FAQs OUTREACH NEWS & EVENTS GALLERY COMMUNITY SUBMISSIONS CONTACT GET INVOLVED

GET INVOLVED

Help the City of Alhambra Planning Division by telling us about people, places, and stories that matter to you!

We are particularly interested in the lesser-known places that shaped your community. These places may be important for a broad range of reasons, including architecture or landscape design; association with an important person; social, cultural and/or ethnic heritage; residential development, commerce, or industry.

PRINT THE FORM AND MAIL IT TO US
Download the form →

COMPLETE THE FORM ONLINE
Fill out the form →

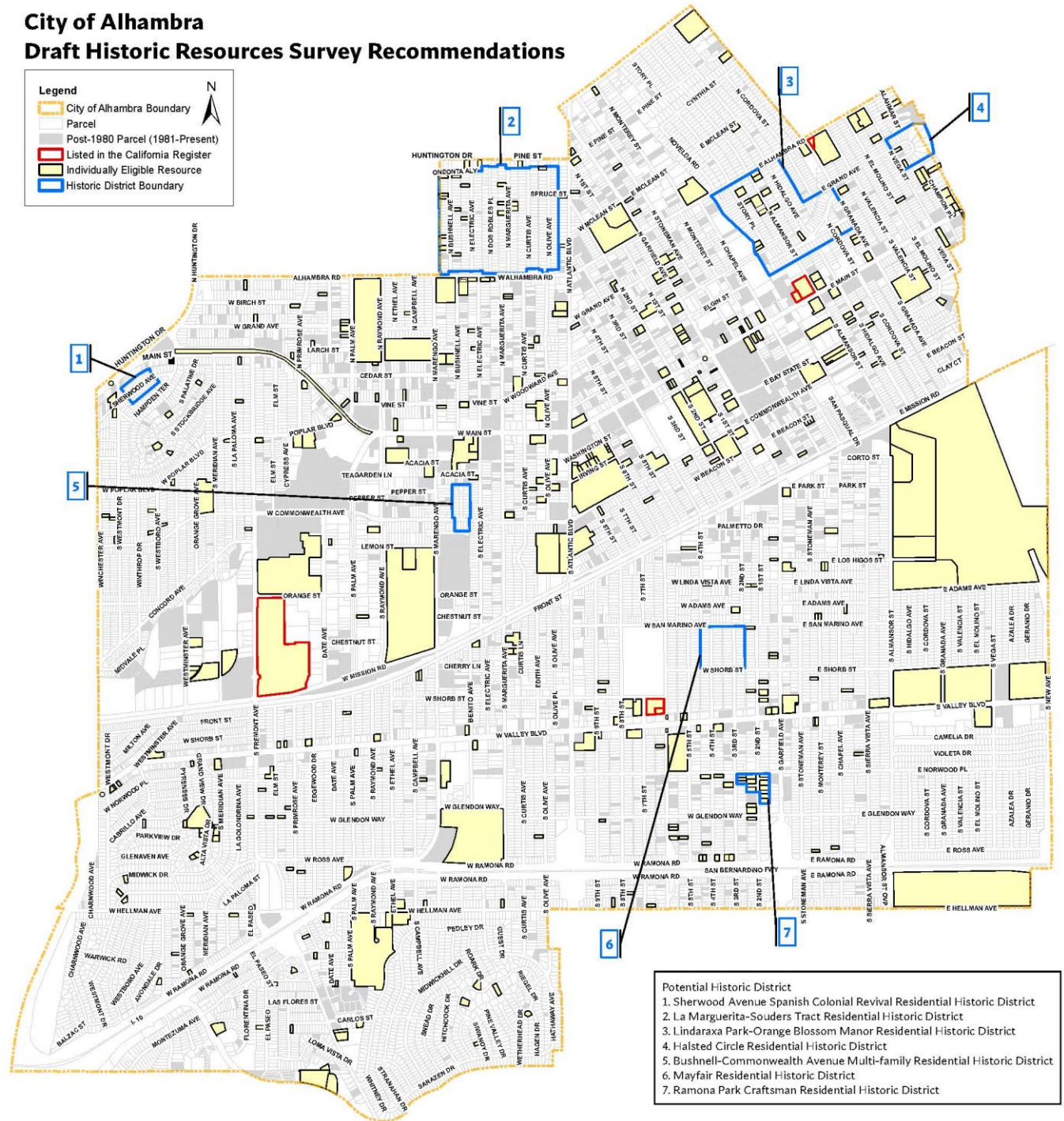
SEE WHAT'S BEEN SUBMITTED
See what your neighbors told us here →

Feedback & Q&A

City of Alhambra Draft Historic Resources Survey Recommendations

Legend

- City of Alhambra Boundary
- Parcel
- Post-1980 Parcel (1981-Present)
- Listed in the California Register
- Individually Eligible Resource
- Historic District Boundary



- Potential Historic District
1. Sherwood Avenue Spanish Colonial Revival Residential Historic District
 2. La Marguerita-Soulers Tract Residential Historic District
 3. Linderaxa Park-Orange Blossom Manor Residential Historic District
 4. Halsted Circle Residential Historic District
 5. Bushnell-Commonwealth Avenue Multi-family Residential Historic District
 6. Mayfair Residential Historic District
 7. Ramona Park Craftsman Residential Historic District